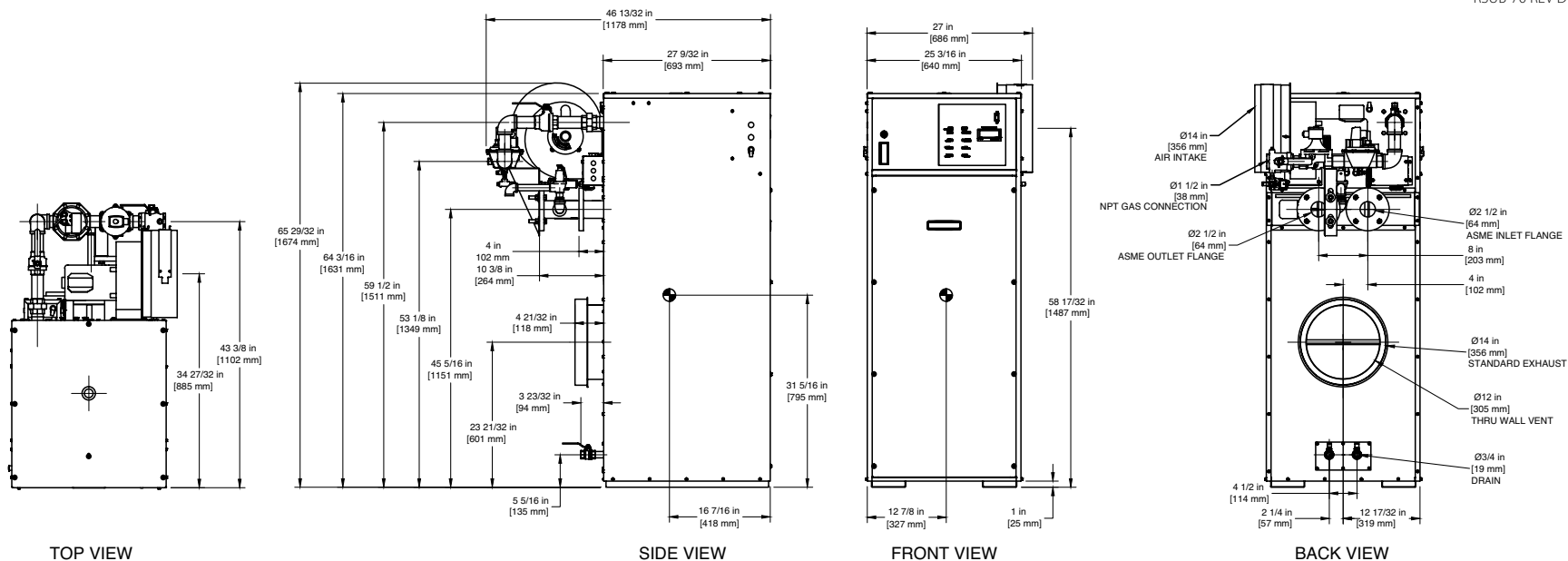


INDOOR UNIT

RSUB-70 REV D



- Notes:**
- 1. Dimensions are approximate and should not be used to "rough-in" equipment.
 - 2. Dimensions are subject to change without notice.

BOILER CERTIFIED RATINGS & CAPACITIES

Fuel Type	Natural/Propane Gas	Boiler FLA	11.5*
Input BTU/hr.	1,950,000 / 571 kW	Min. Gas Pressure Required	5"W.C.**
Output BTU/hr.	1,657,500 / 486 kW	Max. Gas Pressure Allowed	14"W.C.
Electrical Requirements	120 VAC / 1 ph / 60 hz	Operating Weight	863 lbs. / 392 kg.

BOILER TEMPERATURE RISE / PRESSURE DROP

25°F / 13.9°C				30°F / 16.7°C				35°F / 19.4°C			
Flow Rate		Pressure Drop		Flow Rate		Pressure Drop		Flow Rate		Pressure Drop	
GPM	L/s	Ft	kPa	GPM	L/s	Ft	kPa	GPM	L/s	Ft	kPa
132.6	8.4	5.14	15.1	110.5	7.0	3.70	10.8	94.7	6.0	2.80	8.1

BOILER / WATER HEATER TRIM & CONTROLS

Main Gas Valve	V4944B	Main Ball Valve	1 1/2"
Firing Valve	1 1/2"	Pilot Regulator	White-Rodgers 25M
Safety Valve	ASCO L8214G 1 1/2"	Air Switch	HUBA
Ignition Control	Honeywell RM7897C	Blower Motor	Marathon 3/4 hp - FLA 9.8
Operating Control (FB/FW)	Jumo	Relief Valve - FB	1" x 1 1/4" set @ 50 psi
High Limit	Honeywell L4008E	Relief Valve - FW	3/4" x 3/4" set @ 125 psi
		Flow Switch	TACO

A.S.M.E.

ASME Sect IV Htg Surface	215.98 Sq. Ft. / 20.06 Sq. M.	Design Data	Max. 160 psig & 250°F
Water Volume	5.7 gal / 21.6 Liters		

- * Add circulator amps.
** For incoming gas pressures lower than 5" W.C. natural or 11" W.C. propane, consult factory.

WATER HEATER HOURLY RECOVERY CAPACITY (GPH & LPH)

40°F	22°C	60°F	33°C	80°F	44°C	100°F	56°C	120°F	67°C	140°F	78°C
4976	18809	3317	12539	2488	9405	1990	7524	1659	6270	1422	5374

Boilers & Water Heaters not available for sale in Canada due to NRCan regulations.

REP FIRM _____

SUBMITTED BY _____

JOB NAME _____

ARCHITECT _____

ENGINEER _____

CONTRACTOR _____

DATE _____

FUTERA II 1950

Category I or Category III Appliance

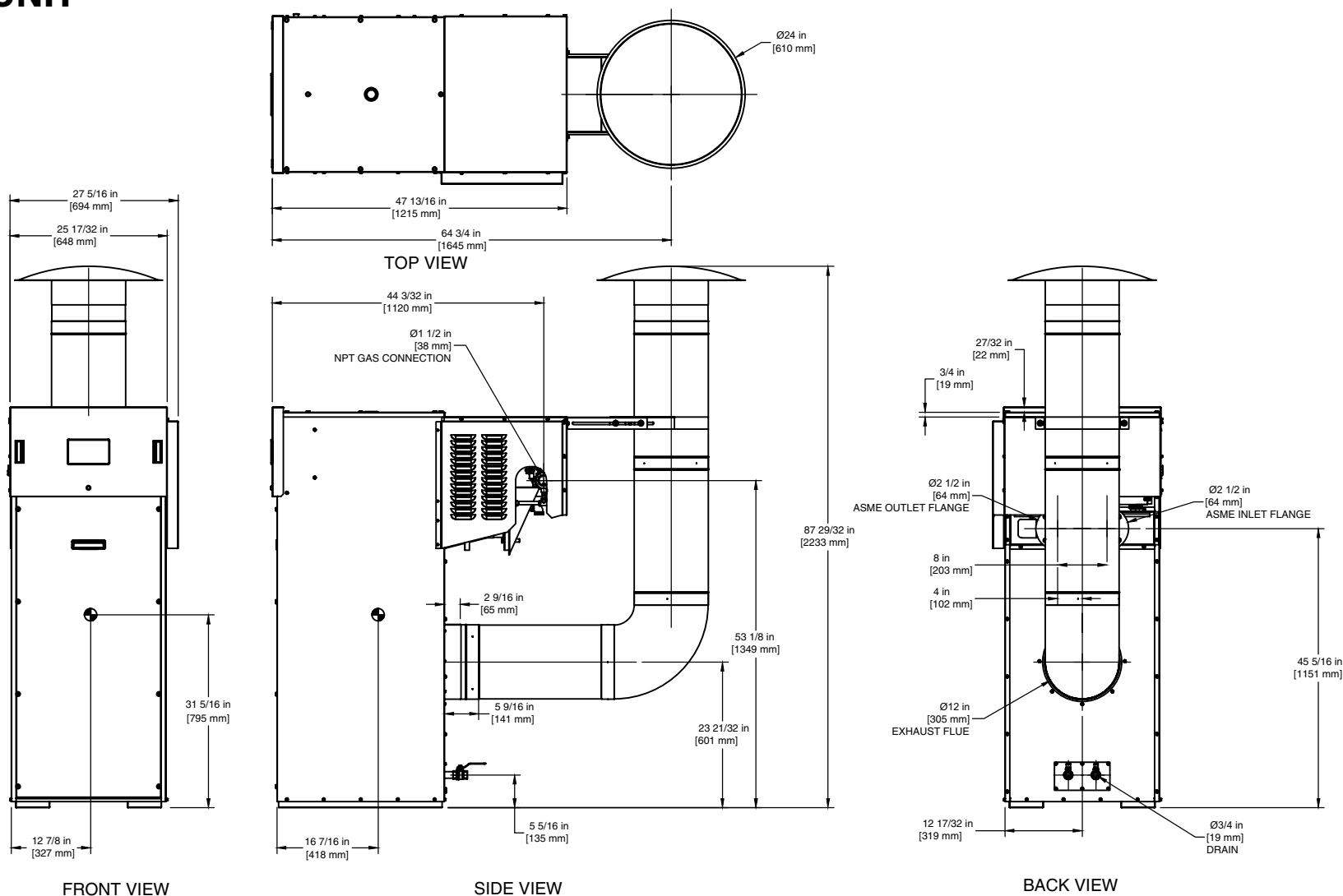
(see Installation and Operation Manual for venting information)

RBI® A Division of Mestek, Inc.
Westfield, MA 01085
(833) 265-5371

RELIABLE. BOLD. INNOVATIVE.

OUTDOOR UNIT

RSUB-157



Boilers & Water Heaters not available for sale in Canada due to NRCan regulations.

Notes:

1. Dimensions are approximate and should not be used to "rough-in" equipment.
2. Dimensions are subject to change without notice.

FUTERA II 1950